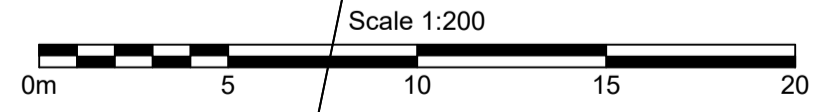


AS CONSTRUCTED



B.B.H.PTY. LTD ABN 010 427 531 (trading as Bennett and Bennett Group) hereby certify that the vertical and horizontal locations, and dimensions shown on this plan are a true and correct record of the As-Constructed information.

Agent
Date

I, hereby certify that the As Constructed information shown on this plan is a true and correct record of sizes, types, materials, classes etc, and it corresponds with the relevant approved Engineering Drawings

Signed
RPEQ No. Date

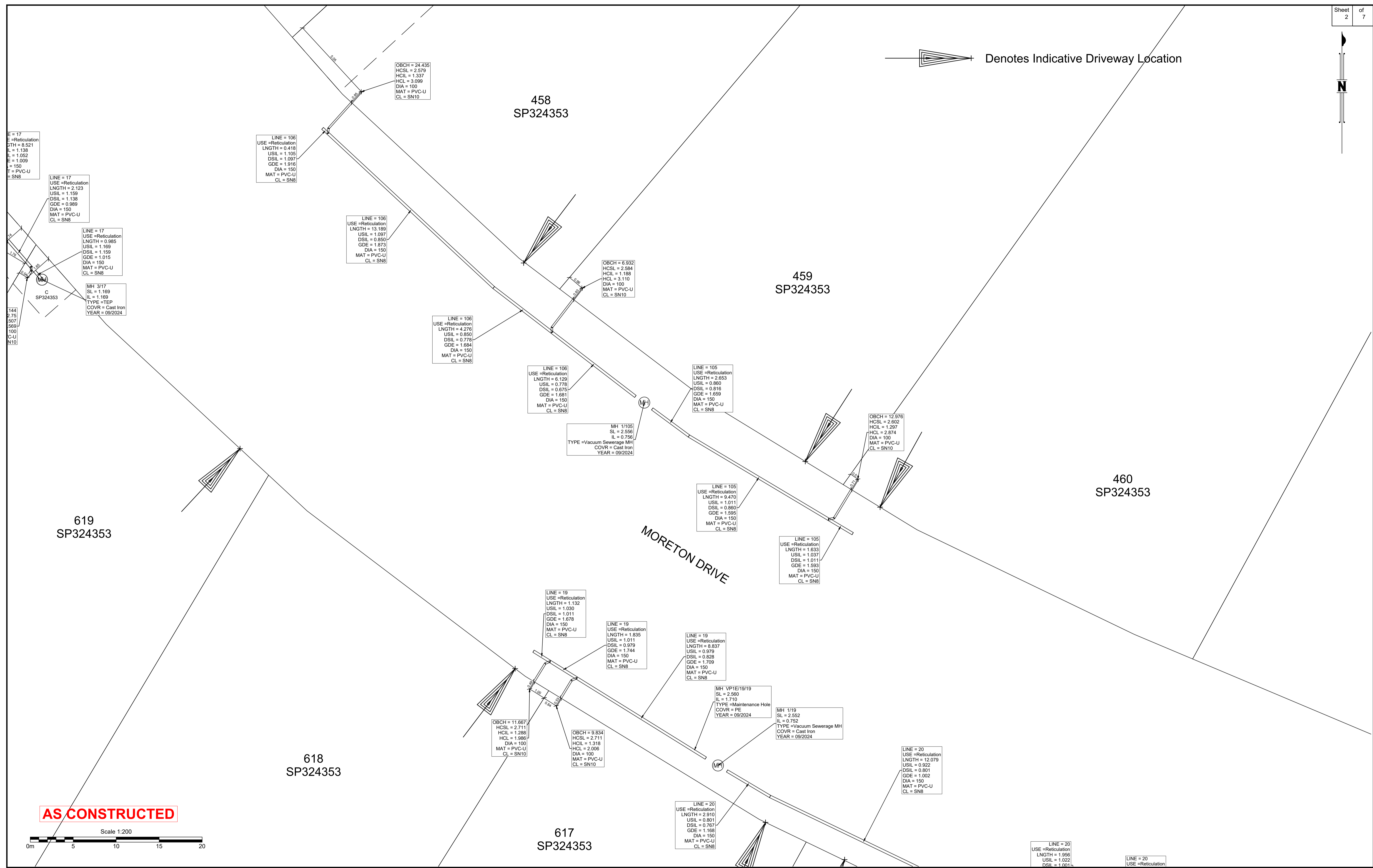
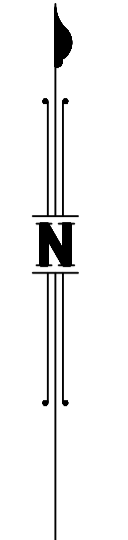
| Revisions | | | |
|-----------|-------------|------------|---------|
| Rev | Description | Date | Initial |
| A | ORIGINAL | 06/04/2025 | NR |
| | | | |
| | | | |
| | | | |
| | | | |
| | | | |
| | | | |
| | | | |
| | | | |
| | | | |

SEWER - AS CONSTRUCTED
STAGE 2N
CALYPSO BAY ESTATE
 OPW/2021/1944

Client: Roche Group Pty Ltd
 Job No: 180649
 Authority: Council of the City of Gold Coast
 Plan No: 180649_S046_ASC_2N-SEW.pdf
 DWG File: 180649_S046_ASC_2N-SEW
 Level Origin & Datum: PM164830 2.887 AHD
 1:1000 @ A1 Drawn: BDH
 Date: 17/04/25

BENNETT + BENNETT
 PO Box 5021, GCMC QLD 9726
 Ph: (07) 5631 8000
 mail@bennettandbennett.com.au
 www.bennettandbennett.com.au

Denotes Indicative Driveway Location



Revisions

| Rev | Description | Date | Initial |
|-----|-------------|------------|---------|
| A | ORIGINAL | 08/04/2025 | NR |
| | | | |
| | | | |
| | | | |
| | | | |
| | | | |
| | | | |
| | | | |
| | | | |
| | | | |

SEWER - AS CONSTRUCTED
STAGE 2N
CALYPSO BAY ESTATE
OPW/2021/1944

| | |
|-----------------------|-----------------------------------|
| Client: | Roche Group Pty Ltd |
| Job No: | 180649 |
| Authority: | Council of the City of Gold Coast |
| Plan No: | 180649_S046_ASC_2N-SEW.pdf |
| DWG File: | 180649_S046_ASC_2N-SEW |
| Level Origin & Datum: | PM164830 2.887 AHD |
| Scale: | 1:100 @ A1 |
| Drawn: | BDH |
| Date: | 17/04/25 |

BENNETT + BENNETT

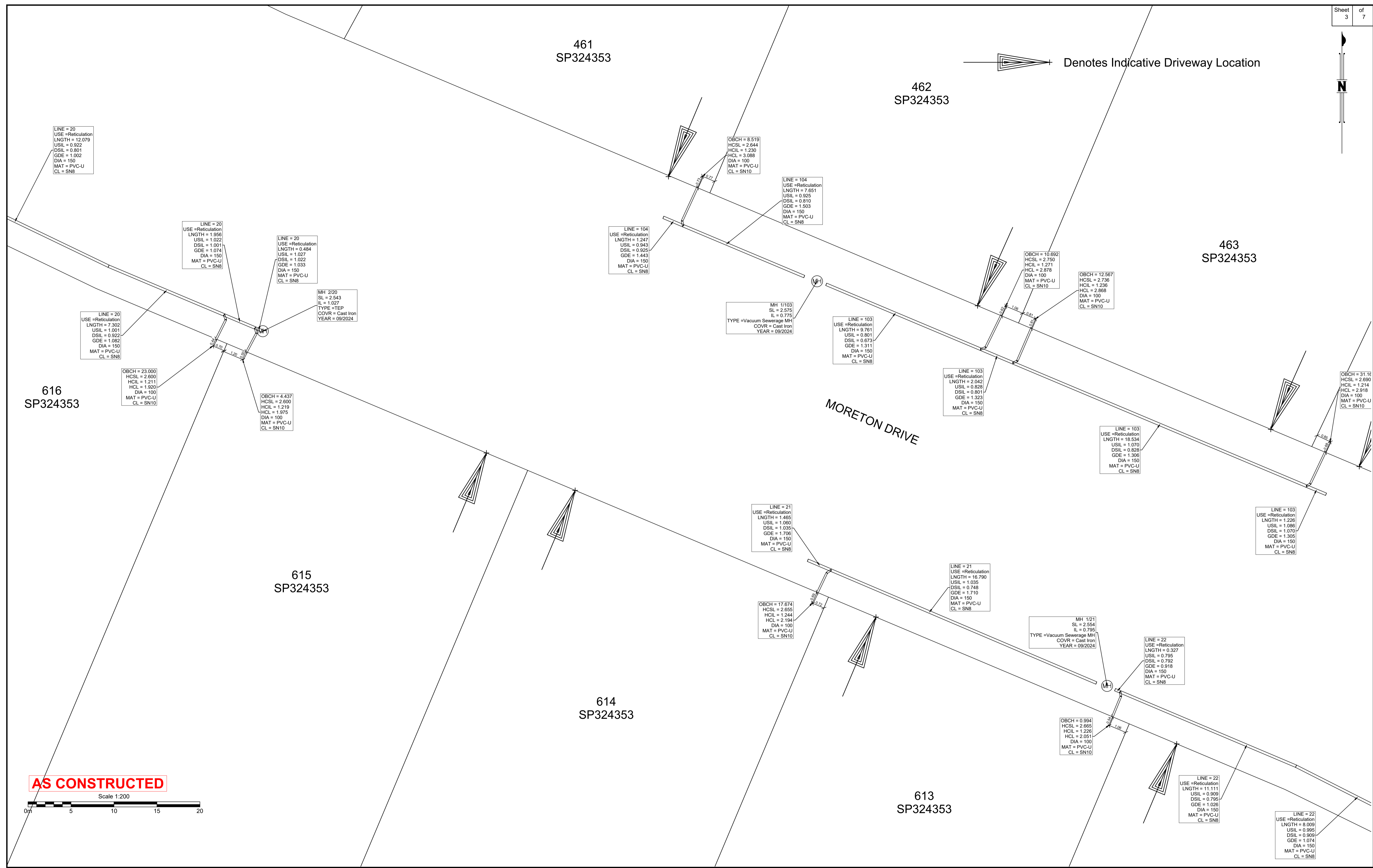
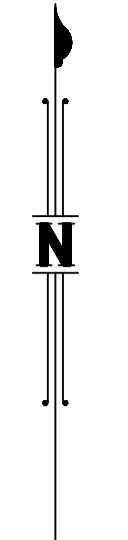
PO Box 5021, GCMC QLD 9726
 Ph: (07) 5631 8000
 mail@bennettandbennett.com.au
 www.bennettandbennett.com.au

B.B.H.PTY. LTD ABN 010 427 531 (trading as Bennett and Bennett Group) hereby certify that the vertical and horizontal locations, and dimensions shown on this plan are a true and correct record of the As-Constructed information.

Agent
 Date

I, hereby certify that the As Constructed information shown on this plan is a true and correct record of sizes, types, materials, classes etc, and it corresponds with the relevant approved Engineering Drawings

Signed
 RPEQ No. Date



AS CONSTRUCTED
Scale 1:200

B.B.H.PTY. LTD ABN 010 427 531 (trading as Bennett and Bennett Group) hereby certify that the vertical and horizontal locations, and dimensions shown on this plan are a true and correct record of the As-Constructed information.

Agent
Date

I, hereby certify that the As Constructed information shown on this plan is a true and correct record of sizes, types, materials, classes etc, and it corresponds with the relevant approved Engineering Drawings

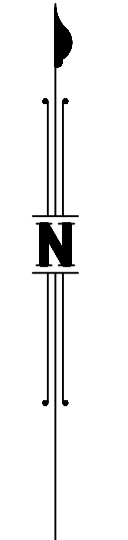
Signed
RPEQ No. Date

| Revisions | | | |
|-----------|-------------|------------|---------|
| Rev | Description | Date | Initial |
| A | ORIGINAL | 06/04/2025 | NR |
| | | | |
| | | | |
| | | | |
| | | | |
| | | | |
| | | | |
| | | | |
| | | | |
| | | | |

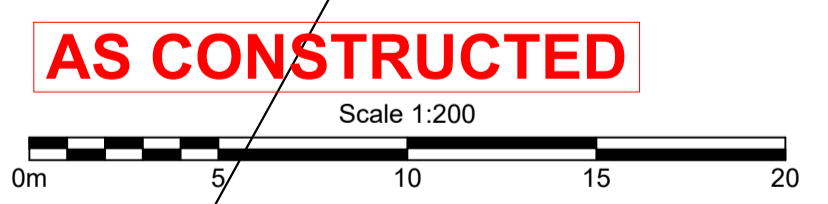
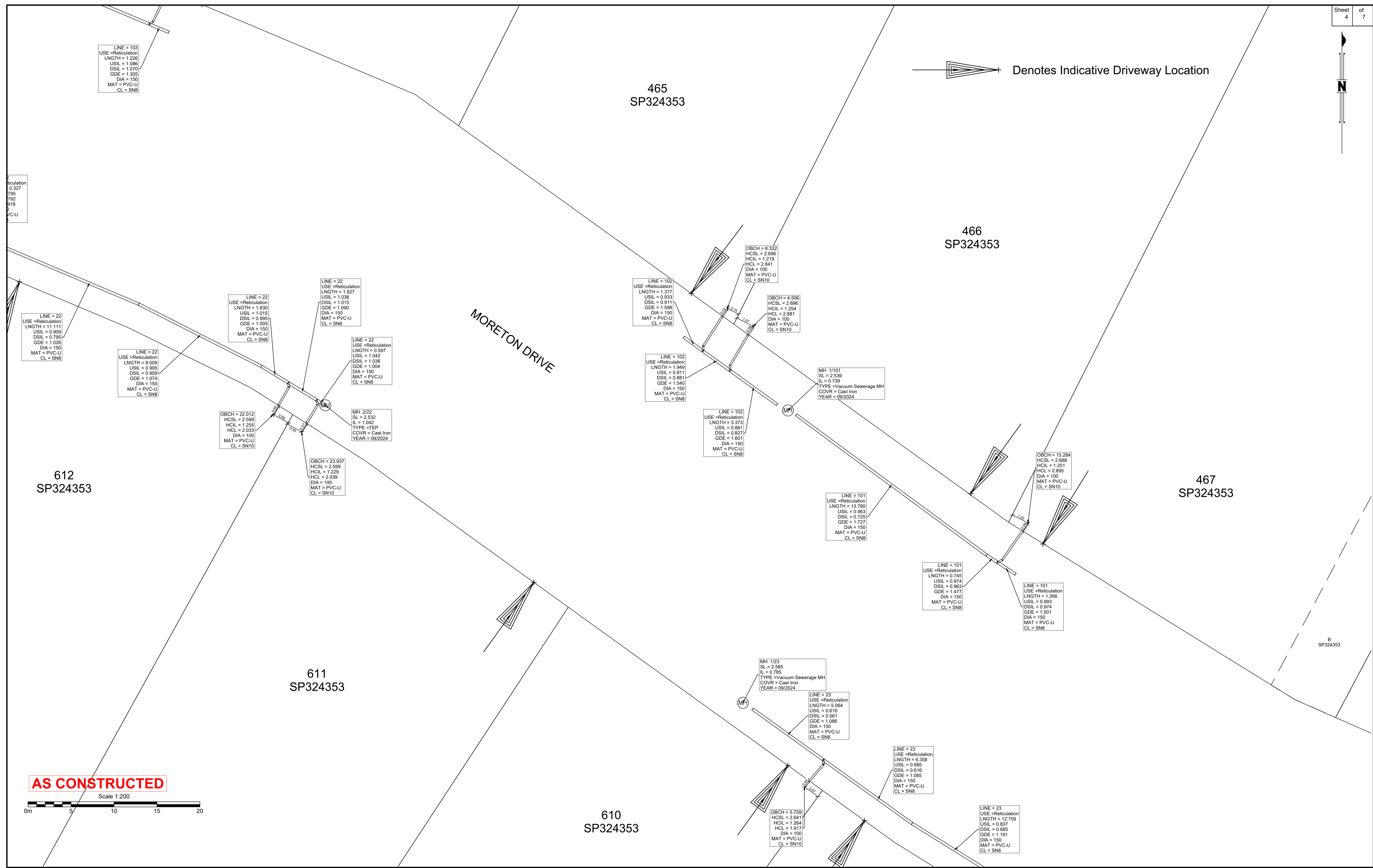
SEWER - AS CONSTRUCTED
STAGE 2N
CALYPSO BAY ESTATE
OPW/2021/1944

Client: Roche Group Pty Ltd
Job No: 180649
Authority: Council of the City of Gold Coast
Plan No: 180649_S046_ASC_2N-SEW.pdf
DWG File: 180649_S046_ASC_2N-SEW
Level Origin & Datum: PM164830 2.887 AHD
1:1000 @ A1 Drawn: BDH
Date: 17/04/25

BENNETT + BENNETT
PO Box 5021, GCMC QLD 9726
Ph: (07) 5631 8000
mail@bennettandbennett.com.au
www.bennettandbennett.com.au



Denotes Indicative Driveway Location



B.B.H.PTY. LTD ABN 010 427 531 (trading as Bennett and Bennett Group) hereby certify that the vertical and horizontal locations, and dimensions shown on this plan are a true and correct record of the As-Constructed information.

Agent _____
Date _____

I, _____ hereby certify that the As Constructed information shown on this plan is a true and correct record of sizes, types, materials, classes etc, and it corresponds with the relevant approved Engineering Drawings

Signed _____
RPEQ No. _____ Date _____

| Revisions | | | |
|-----------|-------------|------------|---------|
| Rev | Description | Date | Initial |
| A | ORIGINAL | 08/04/2025 | NR |
| | | | |
| | | | |
| | | | |
| | | | |
| | | | |
| | | | |
| | | | |
| | | | |

SEWER - AS CONSTRUCTED
STAGE 2N
CALYPSO BAY ESTATE
OPW/2021/1944

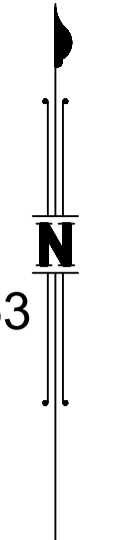
Client: Roche Group Pty Ltd
 Job No: 180649
 Authority: Council of the City of Gold Coast
 Plan No: 180649_S046_ASC_2N-SEW.pdf
 DWG File: 180649_S046_ASC_2N-SEW
 Level Origin & Datum: PM164830 2.887 AHD
 1:1000 @ A1 Drawn: BDH
 Date: 17/04/25


BENNETT + BENNETT
 PO Box 5021, GCMC QLD 9726
 Ph: (07) 5631 8000
 mail@bennettandbennett.com.au
 www.bennettandbennett.com.au

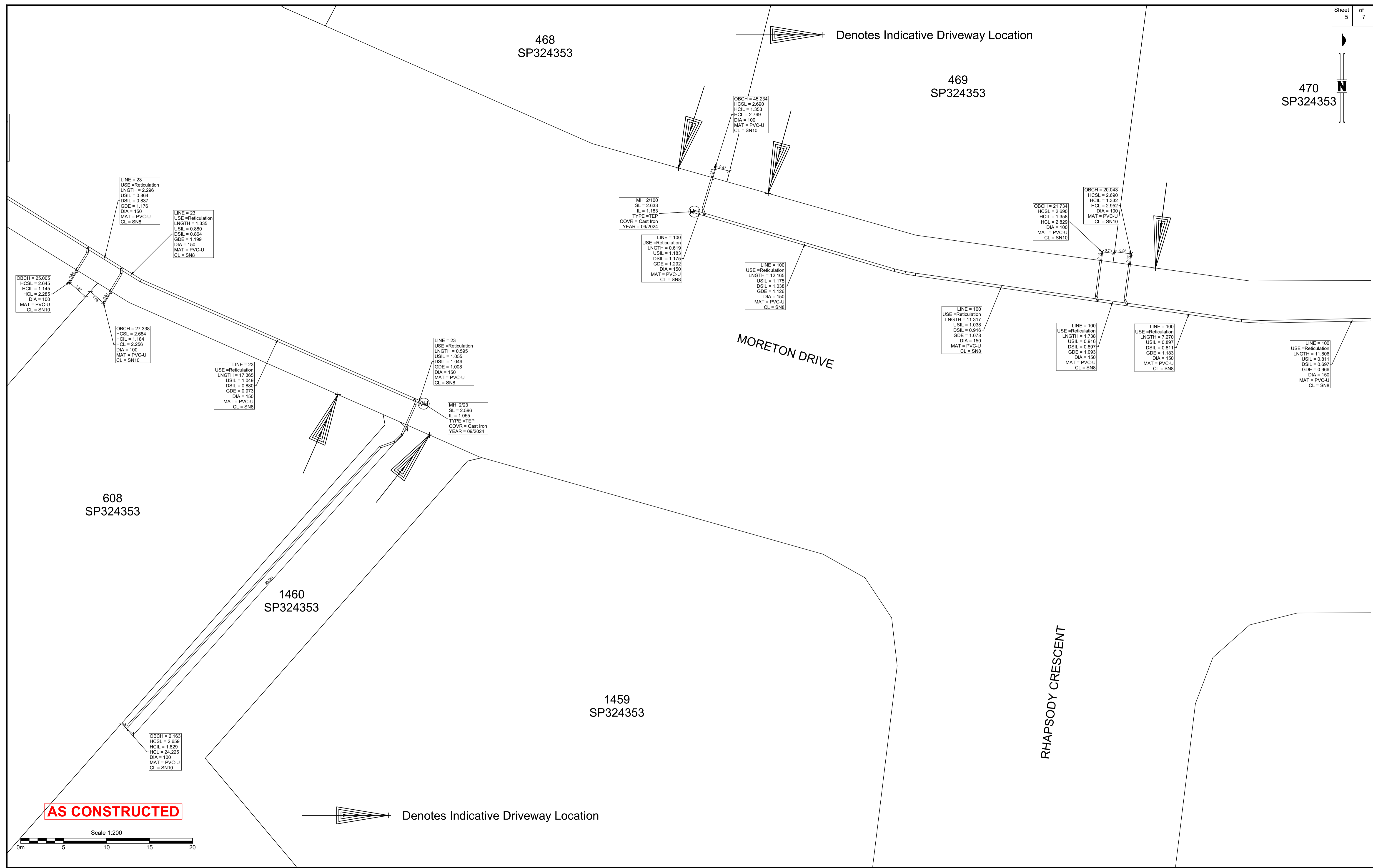
468
SP324353

469
SP324353

470
SP324353



Denotes Indicative Driveway Location



OBCH = 25.005
HCSL = 2.645
HCL = 1.145
HCL = 2.285
DIA = 100
MAT = PVC-U
CL = SN10

LINE = 23
USE = Reticulation
LNTH = 2.296
USIL = 0.864
DSIL = 0.837
GDE = 1.176
DIA = 150
MAT = PVC-U
CL = SN8

LINE = 23
USE = Reticulation
LNTH = 1.335
USIL = 0.880
DSIL = 0.864
GDE = 1.199
DIA = 150
MAT = PVC-U
CL = SN8

OBCH = 27.338
HCSL = 2.684
HCL = 1.184
HCL = 2.256
DIA = 100
MAT = PVC-U
CL = SN10

LINE = 23
USE = Reticulation
LNTH = 17.365
USIL = 1.049
DSIL = 0.880
GDE = 0.973
DIA = 150
MAT = PVC-U
CL = SN8

LINE = 23
USE = Reticulation
LNTH = 0.595
USIL = 1.055
DSIL = 1.049
GDE = 1.008
DIA = 150
MAT = PVC-U
CL = SN8

MH 2/23
SL = 2.596
IL = 1.055
TYPE = TEP
COVR = Cast Iron
YEAR = 09/2024

MH 2/100
SL = 2.633
IL = 1.183
TYPE = TEP
COVR = Cast Iron
YEAR = 09/2024

LINE = 100
USE = Reticulation
LNTH = 0.619
USIL = 1.183
DSIL = 1.175
GDE = 1.292
DIA = 150
MAT = PVC-U
CL = SN8

LINE = 100
USE = Reticulation
LNTH = 12.165
USIL = 1.175
DSIL = 1.038
GDE = 1.126
DIA = 150
MAT = PVC-U
CL = SN8

MORETON DRIVE

LINE = 100
USE = Reticulation
LNTH = 11.317
USIL = 1.038
DSIL = 0.916
GDE = 1.076
DIA = 150
MAT = PVC-U
CL = SN8

LINE = 100
USE = Reticulation
LNTH = 1.738
USIL = 0.916
DSIL = 0.897
GDE = 1.093
DIA = 150
MAT = PVC-U
CL = SN8

LINE = 100
USE = Reticulation
LNTH = 7.270
USIL = 0.897
DSIL = 0.811
GDE = 1.183
DIA = 150
MAT = PVC-U
CL = SN8

LINE = 100
USE = Reticulation
LNTH = 11.806
USIL = 0.811
DSIL = 0.697
GDE = 0.966
DIA = 150
MAT = PVC-U
CL = SN8

RHAPSODY CRESCENT

1459
SP324353

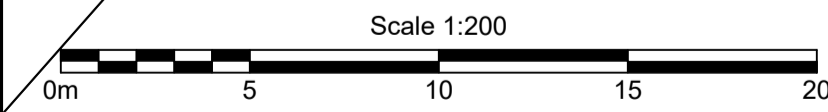
1460
SP324353

608
SP324353

OBCH = 2.163
HCSL = 2.659
HCL = 1.829
HCL = 24.225
DIA = 100
MAT = PVC-U
CL = SN10

AS CONSTRUCTED

Denotes Indicative Driveway Location



B.B.H.PTY. LTD ABN 010 427 531
(trading as Bennett and Bennett Group) hereby certify
that the vertical and horizontal locations, and
dimensions shown on this plan are a true and
correct record of the As-Constructed information.

.....
Agent
.....
Date

I,,
hereby certify that the As Constructed
information shown on this plan is a true and
correct record of sizes, types, materials,
classes etc, and it corresponds with the
relevant approved Engineering Drawings

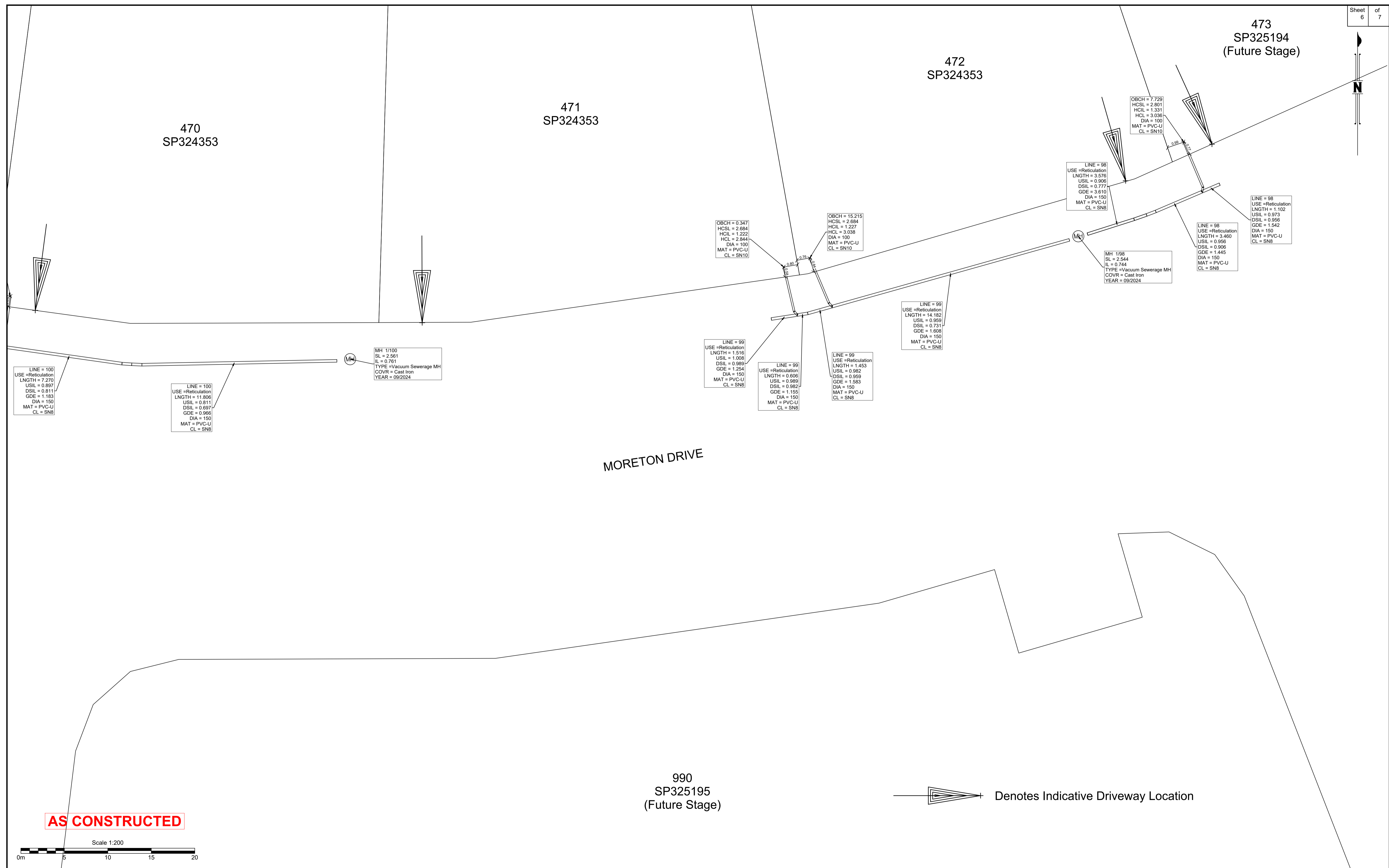
Signed,
RPEQ No. Date

| Revisions | | | |
|-----------|-------------|------------|---------|
| Rev | Description | Date | Initial |
| A | ORIGINAL | 08/04/2025 | NR |
| | | | |
| | | | |
| | | | |
| | | | |
| | | | |
| | | | |
| | | | |
| | | | |

SEWER - AS CONSTRUCTED
STAGE 2N
CALYPSO BAY ESTATE
OPW/2021/1944

Client: Roche Group Pty Ltd
Job No: 180649
Authority: Council of the City of Gold Coast
Plan No: 180649_S046_ASC_2N-SEW.pdf
DWG File: 180649_S046_ASC_2N-SEW
Level Origin & Datum: PM164830 2.887 AHD
1:1000 @ A1 Drawn: BDH
Date: 17/04/25

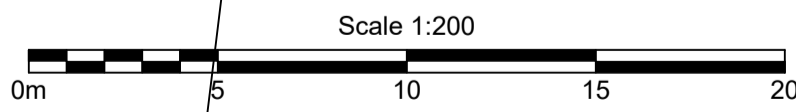
BENNETT + BENNETT
PO Box 5021, GCMC QLD 9726
Ph: (07) 5631 8000
mail@bennettandbennett.com.au
www.bennettandbennett.com.au



MORETON DRIVE

Denotes Indicative Driveway Location

AS CONSTRUCTED



B.B.H.PTY. LTD ABN 010 427 531
(trading as Bennett and Bennett Group) hereby certify that the vertical and horizontal locations, and dimensions shown on this plan are a true and correct record of the As-Constructed information.

Agent
Date

I, hereby certify that the As Constructed information shown on this plan is a true and correct record of sizes, types, materials, classes etc, and it corresponds with the relevant approved Engineering Drawings

Signed
RPEQ No. Date

| Revisions | | | |
|-----------|-------------|------------|---------|
| Rev | Description | Date | Initial |
| A | ORIGINAL | 08/04/2025 | NR |
| | | | |
| | | | |
| | | | |
| | | | |
| | | | |
| | | | |
| | | | |

SEWER - AS CONSTRUCTED
STAGE 2N
CALYPSO BAY ESTATE
OPW/2021/1944

| | |
|-----------------------|-----------------------------------|
| Client: | Roche Group Pty Ltd |
| Job No: | 180649 |
| Authority: | Council of the City of Gold Coast |
| Plan No: | 180649_S046_ASC_2N-SEW.pdf |
| DWG File: | 180649_S046_ASC_2N-SEW |
| Level Origin & Datum: | PM164830 2.887 AHD |
| 1:1000 @ A1 | Drawn: BDH |
| Date: | 17/04/25 |

BENNETT + BENNETT

PO Box 5021, GCMC QLD 9726
Ph: (07) 5631 8000
mail@bennettandbennett.com.au
www.bennettandbennett.com.au



Denotes Indicative Driveway Location

1459
SP324353

1458
SP324353

1457
SP324353

1456
SP324353

RHAPSODY CRESCENT

990
SP325195
(Future Stage)

OBCH = 24.385
HCCL = 2.801
HCL = 1.383
HCL = 2.753
DIA = 100
MAT = PVC-U
CL = SN10

MH 2/24
SL = 2.781
IL = 1.09
TYPE = TEP
COVR = Cast Iron
YEAR = 09/2024

LINE = 24
USE = Reticulation
LNTH = 0.712
USIL = 1.09
DSIL = 1.073
GDE = 2.387
DIA = 150
MAT = PVC-U
CL = SN8

LINE = 24
USE = Reticulation
LNTH = 6.678
USIL = 1.083
DSIL = 1.013
GDE = 1.048
DIA = 150
MAT = PVC-U
CL = SN8

LINE = 24
USE = Reticulation
LNTH = 2.068
USIL = 1.013
DSIL = 0.992
GDE = 1.016
DIA = 150
MAT = PVC-U
CL = SN8

LINE = 24
USE = Reticulation
LNTH = 14.848
USIL = 0.985
DSIL = 0.837
GDE = 0.997
DIA = 150
MAT = PVC-U
CL = SN8

OBCH = 2.814
HCCL = 2.833
HCL = 1.976
HCL = 18.422
DIA = 100
MAT = PVC-U
CL = SN10

OBCH = 15.808
HCCL = 2.845
HCL = 1.447
HCL = 2.890
DIA = 100
MAT = PVC-U
CL = SN10

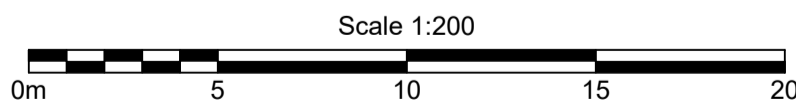
MH 1/24
SL = 2.876
IL = 1.076
TYPE = Vacuum Sewerage MH
COVR = Cast Iron
YEAR = 09/2024

LINE = 25
USE = Reticulation
LNTH = 7.845
USIL = 1.121
DSIL = 0.990
GDE = 1.670
DIA = 150
MAT = PVC-U
CL = SN8

LINE = 25
USE = Reticulation
LNTH = 0.896
USIL = 1.136
DSIL = 1.121
GDE = 1.675
DIA = 150
MAT = PVC-U
CL = SN8

OBCH = 8.561
HCCL = 2.951
HCL = 1.481
HCL = 2.927
DIA = 100
MAT = PVC-U
CL = SN10

AS CONSTRUCTED



B.B.H.PTY. LTD ABN 010 427 531
(trading as Bennett and Bennett Group) hereby certify
that the vertical and horizontal locations, and
dimensions shown on this plan are a true and
correct record of the As-Constructed information.

.....
Agent
.....
Date

I,
hereby certify that the As Constructed
information shown on this plan is a true and
correct record of sizes, types, materials,
classes etc, and it corresponds with the
relevant approved Engineering Drawings

Signed

RPEQ No. Date

Revisions

| Rev | Description | Date | Initial |
|-----|-------------|------------|---------|
| A | ORIGINAL | 08/04/2025 | NR |
| | | | |
| | | | |
| | | | |
| | | | |
| | | | |
| | | | |
| | | | |
| | | | |
| | | | |

SEWER - AS CONSTRUCTED
STAGE 2N
CALYPSO BAY ESTATE
OPW/2021/1944

| | |
|-----------------------|-----------------------------------|
| Client: | Roche Group Pty Ltd |
| Job No: | 180649 |
| Authority: | Council of the City of Gold Coast |
| Plan No: | 180649_S046_ASC_2N-SEW.pdf |
| DWG File: | 180649_S046_ASC_2N-SEW |
| Level Origin & Datum: | PM164830 2.887 AHD |
| 1:1000 @ A1 | Drawn: BDH |
| Date: | 17/04/25 |

BENNETT + BENNETT

PO Box 5021, GCMC QLD 9726
Ph: (07) 5631 8000
mail@bennettandbennett.com.au
www.bennettandbennett.com.au