

B.B.H.PTY. LTD ABN 010 427 531
 (trading as Bennett and Bennett Group) hereby certify
 that the vertical and horizontal locations, and
 dimensions shown on this plan are a true and
 correct record of the As-Constructed information.

.....
 Agent

 Date

I,,
 hereby certify that the As Constructed
 information shown on this plan is a true and
 correct record of sizes, types, materials,
 classes etc, and it corresponds with the
 relevant approved Engineering Drawings

Signed,
 RPEQ No. Date

Rev	Description	Date	Initial
A	ORIGINAL	21/02/2025	BDH

Rev	Description	Date	Initial
A	ORIGINAL	21/02/2025	BDH

WATERMAIN - AS CONSTRUCTED
 STAGE 2J
 CALYPSO BAY ESTATE
 OPW/2021/1944

Client:	Roche Group Pty Ltd
Job No:	180649
Authority:	Council of the City of Gold Coast
Plan No:	180649_S038_ASC.pdf
DWG File:	180649_S038_ASC.dwg
Level Origin & Datum:	PM164830 2.887 AHD
Scale:	1:200 @ A1
Drawn:	BDH
Date:	21/02/25

BENNETT + BENNETT

PO Box 5021, GCMC QLD 9726
 Ph: (07) 5631 8000
 mail@bennettandbennett.com.au
 www.bennettandbennett.com.au



B.B.H.PTY. LTD ABN 010 427 531
(trading as Bennett and Bennett Group) hereby certify
that the vertical and horizontal locations, and
dimensions shown on this plan are a true and
correct record of the As-Constructed information.

Agent
Date

I,
hereby certify that the As Constructed
information shown on this plan is a true and
correct record of sizes, types, materials,
classes etc, and it corresponds with the
relevant approved Engineering Drawings

Signed
RPEQ No. Date

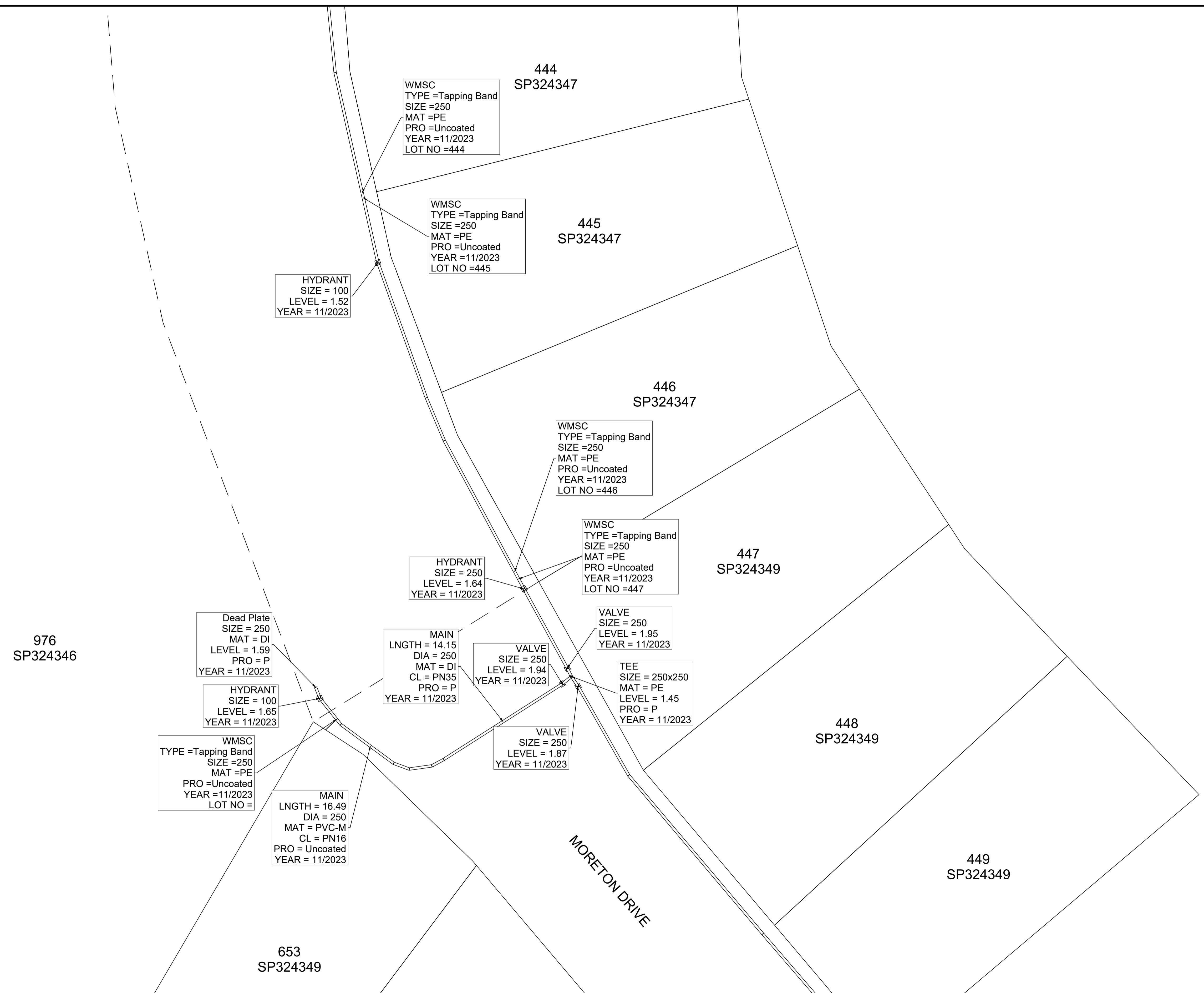
Revisions

Rev	Description	Date	Initial
A	ORIGINAL	21/02/2025	BDH

WATERMAIN - AS CONSTRUCTED
STAGE 2J
CALYPSO BAY ESTATE
OPW/2021/1944

Client: Roche Group Pty Ltd	
Job No: 180649	
Authority: Council of the City of Gold Coast	
Plan No: 180649_S038_ASC.pdf	
DWG File: 180649_S038_ASC.dwg	
Level Origin & Datum:	PM164830 2.887 AHD
1:200 @ A1	Drawn: BDH
Date: 21/02/25	

BENNETT + BENNETT
PO Box 5021, GCMC QLD 9726
Ph: (07) 5631 8000
mail@bennettandbennett.com.au
www.bennettandbennett.com.au



B.B.H.PTY. LTD ABN 010 427 531
(trading as Bennett and Bennett Group) hereby certify
that the vertical and horizontal locations, and
dimensions shown on this plan are a true and
correct record of the As-Constructed information.

.....
Agent
.....
Date

I,,
hereby certify that the As Constructed
information shown on this plan is a true and
correct record of sizes, types, materials,
classes etc, and it corresponds with the
relevant approved Engineering Drawings

Signed,
RPEQ No. Date

Revisions			
Rev	Description	Date	Initial
A	ORIGINAL	21/02/2025	BDH

WATERMAIN - AS CONSTRUCTED
STAGE 2J
CALYPSO BAY ESTATE
OPW/2021/1944

Client: Roche Group Pty Ltd	
Job No: 180649	
Authority: Council of the City of Gold Coast	
Plan No: 180649_S038_ASC.pdf	
DWG File: 180649_S038_ASC.dwg	
Level Origin & Datum:	PM164830 2.887 AHD
1:200 @ A1	Drawn: BDH
Date: 21/02/25	

BENNETT + BENNETT
PO Box 5021, GCMC QLD 9726
Ph: (07) 5631 8000
mail@bennettandbennett.com.au
www.bennettandbennett.com.au